

## Specification of: PFP A1-0450 2.4kW 400V-3F M6F7

### Direct driven high-performance centrifugal fan PFP

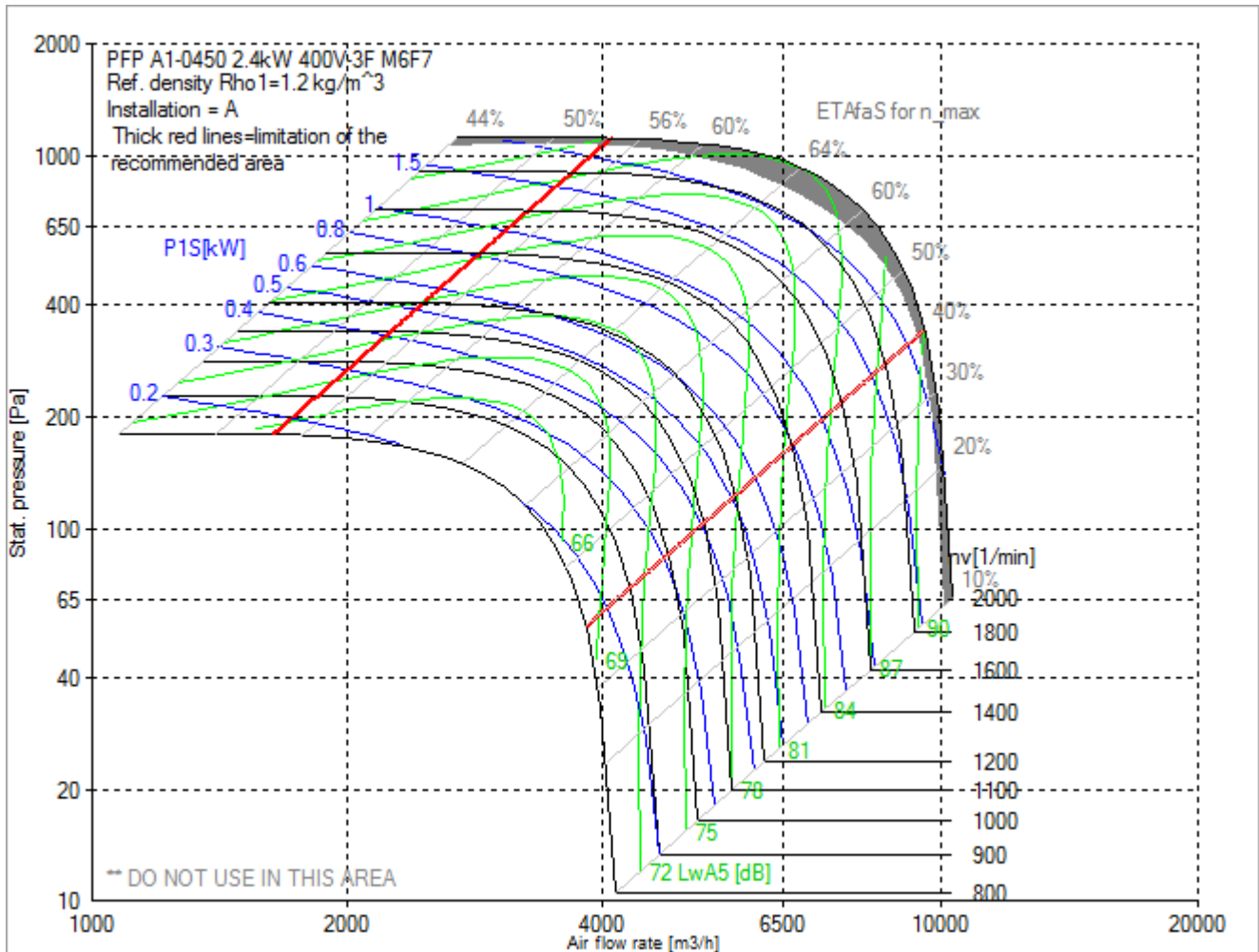
Motorized impeller with high system efficiency, with matching inlet nozzle, loose, suitable for horizontal or vertical installation, specifically developed and optimized for use without a scroll case. Equipped with flow measuring device IMV as a standard feature. Aluminium-made centrifugal impeller with 7 backward inclined welded blades. The wheel is directly fitted to a brushless external-rotor motor, with no transmission losses. The complete unit is dynamically balanced according to DIN ISO 21940-11. Light-weight motor frame cast from corrosion-resistant aluminium. A three-phase sensorless driver is fully integrated into the motor. Continuous speed control of the Drive System by 0 ... 10 V analogue signal, or with Modbus RS485-compliant interface. All the drive system is protected according to class IP 54. Power supply 400 V – 50/60 Hz. Air performance ratings according to AMCA 210-07 (Fig. 12) and ISO 5801:2007 (Fig. 41 and par. 30.3).

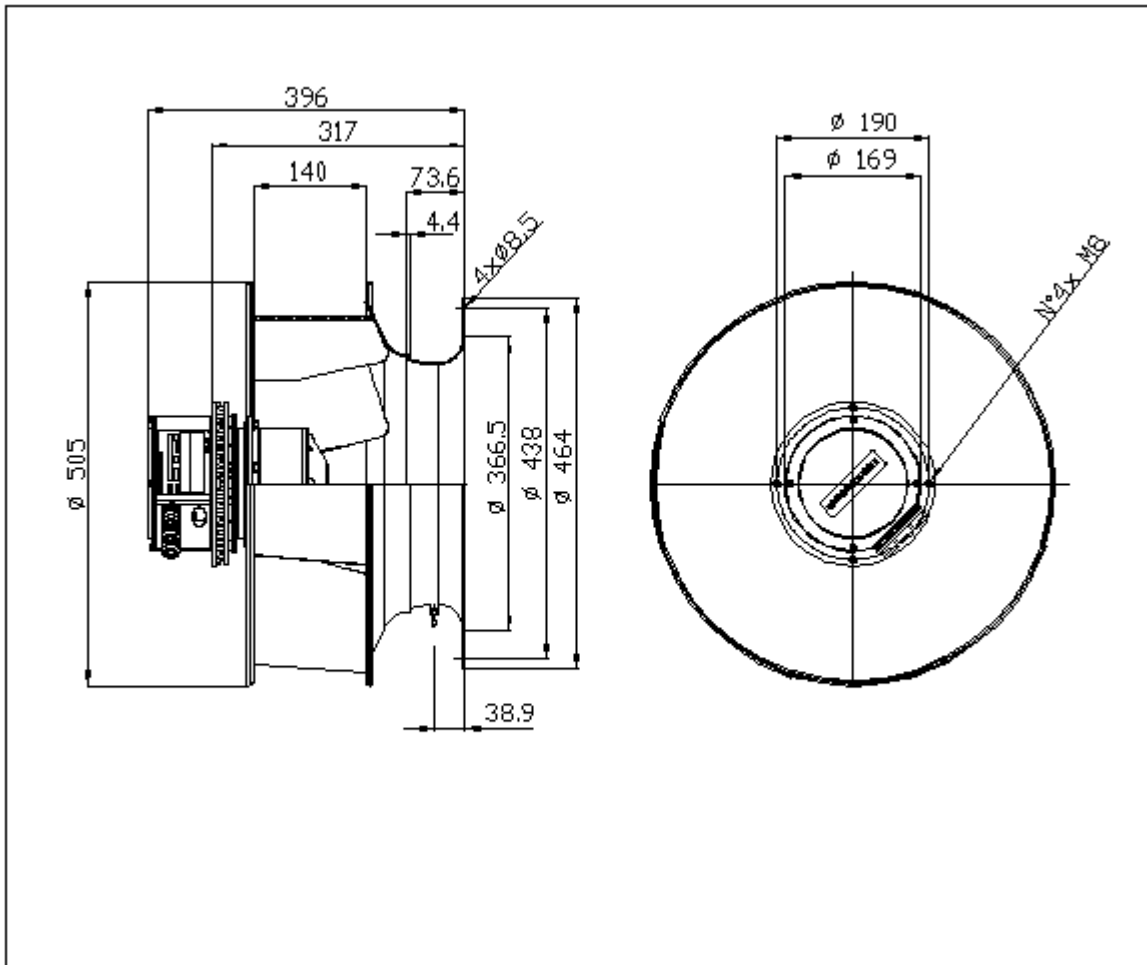
### Technical data of the fan: PFP A1-0450 2.4kW 400V-3F M6F7

[fulfills the ErP requirements 2015](#)

Description	Value Dimension
Installation acc. DIN 24163 Part 1	A
Reference density (Rho1)	1.20 kg/m <sup>3</sup>
Medium temperature (t)	20 C
Fan weight	13 kg
<b>Feed data</b>	
Main's frequency (f <sub>N</sub> )	50/60 Hz
Voltage (U <sub>N</sub> )	3~ 400 V
Phases-Voltage-Frequency	3~400-50 V-Hz
Power (P <sub>N</sub> )	0 kW
<b>operational limits</b>	
Max. fan speed (n <sub>vmax</sub> )	1965 min <sup>-1</sup>
Max. absorbed power of the system (P <sub>maxS</sub> )	2.40 kW
max. current: Inverter out resp. control unit in (I <sub>max</sub> )	3.7 A
Temperature range for conveying medium (t <sub>min</sub> ...t <sub>max</sub> )	-20...40 C
<b>ErP-Data at best efficiency and density - kg/m<sup>3</sup></b>	
measurement- / efficiency category	A / static
design status of VSD	VSD is integrated
overall efficiency (ETA <sub>opt</sub> )	67.6 %
achieved efficiency grade (N <sub>ist</sub> )	74.4
required efficiency grade in 2013 / 2015 (N)	58 / 62
Air flow rate (V <sub>opt</sub> )	6458 m <sup>3</sup> /h
pressure rise (dp <sub>opt</sub> )	839 Pa
Fan speed (n <sub>vopt</sub> )	1892 min <sup>-1</sup>
motor power input (P <sub>1opt</sub> )	2.23 kW
specific ratio (d <sub>dpopt</sub> )	1.008

## Fan curve to PFP A1-0450 2.4kW 400V-3F M6F7

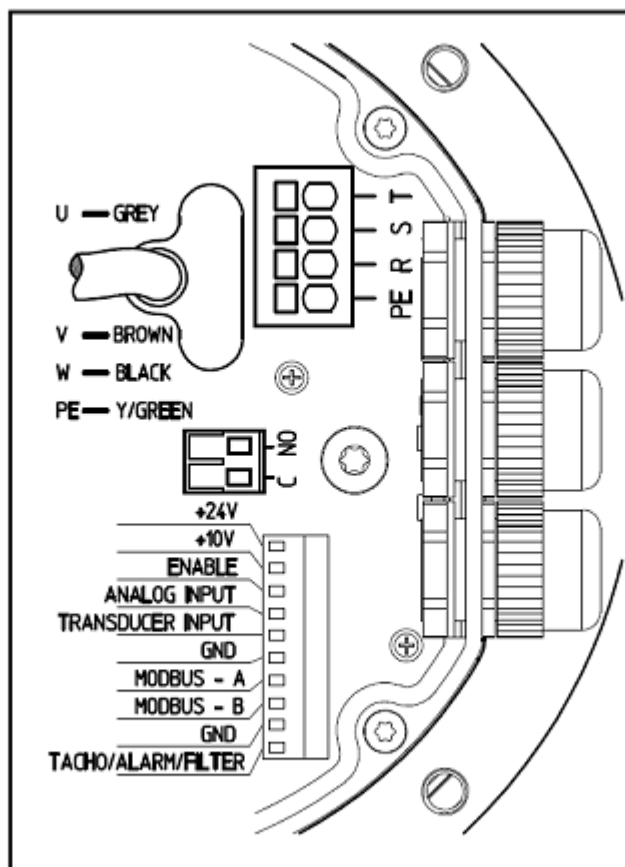




Rotation:  
Handing:

RD  
90

## Wiring diagram of the fan PFP A1-0450 2.4kW 400V-3F M6F7



11-10-2017 6Y

Wiring diagram for connection to: [mains - VSD - motor](#)  
Rotation: [LG](#)